



GLOBAL ISLAMIC FUND FOR REFUGEES

FACTS & FIGURES



Welcome to the launch of

The Global Islamic Fund for Refugees



About GIFR

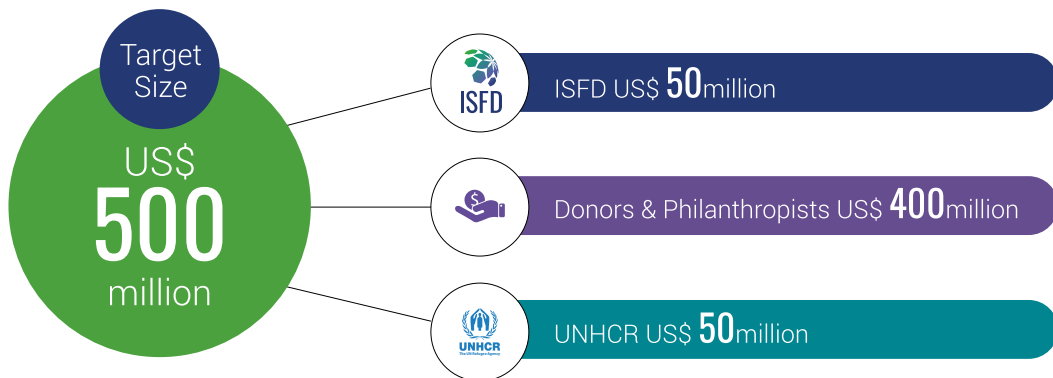
The Global Islamic Fund for Refugees (GIFR) is a joint initiative of the Islamic Solidarity Fund for Development (ISFD), the United Nations High Commissioner for Refugees (UNHCR), and the Islamic Development Bank (IsDB).

The GIFR was established to provide sustainable capital resources to support humanitarian and economic empowerment of refugees, internally displaced people, stateless people, and their host communities in IsDB Member Countries.

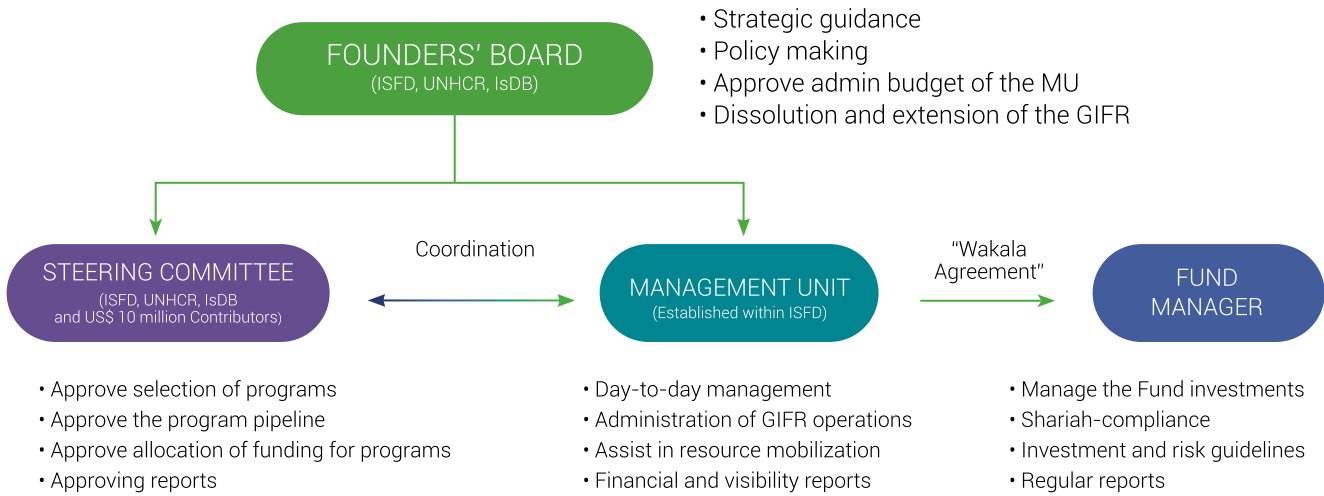
The GIFR is a unique opportunity to invest in addressing the urgent humanitarian needs of millions of forcibly displaced people, with the option of donors recovering their funds at the maturity of the investment period depending on the type of donation and investment reference.

The GIFR is an endowment fund, and programs will be funded from the net income generated from investing the deposited capital. Hence, the Fund's capital is preserved, offering sustainable way of financing.

GIFR Structure



GIFR Governance



Forcibly displaced people living
in Member Countries of the
**Organization of Islamic
Cooperation (OIC)**



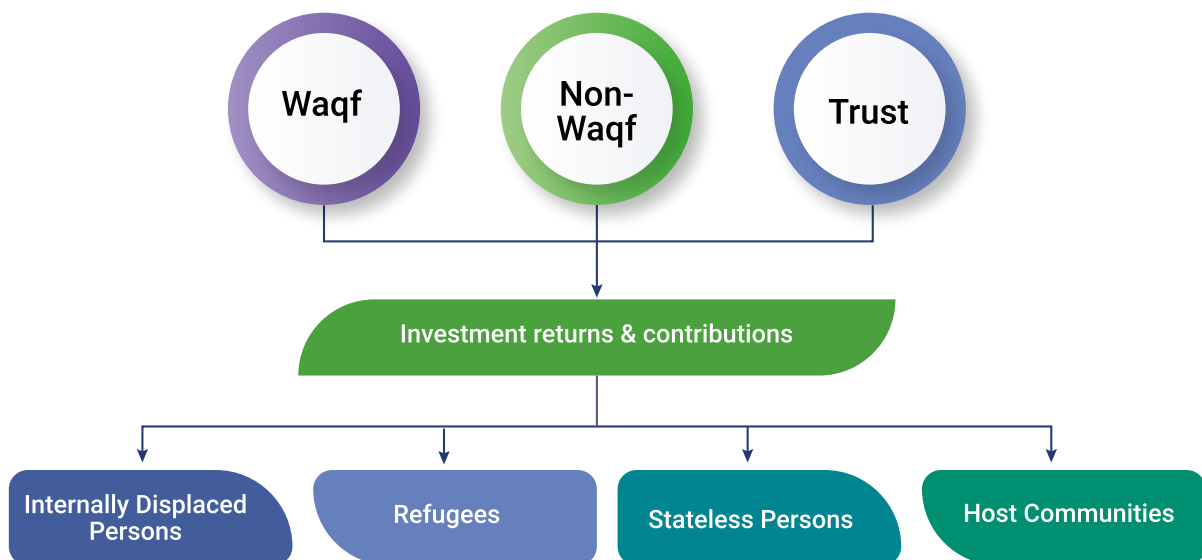
51.5million



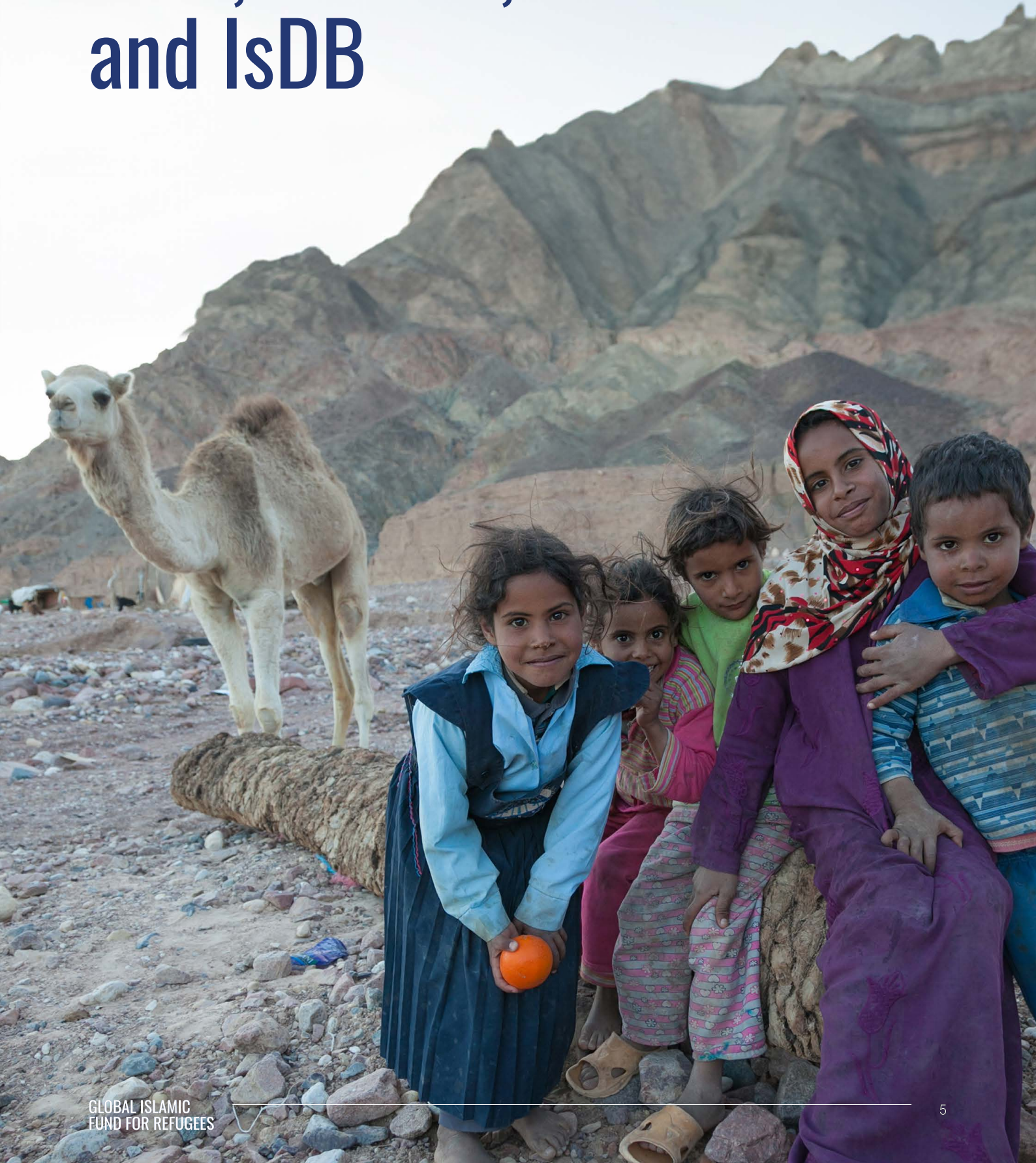
The Main Objectives of the GIFR



Financial Resources and Beneficiaries



Safeguarding refugees' dignity is an essential part of the mandates of
**ISFD, UNHCR,
and IsDB**



GIFR Sector Focus

Proceeds or returns from investments and contributions will be, initially, allocated to and utilized in the following sectors and corresponding programs and projects:



Refugees: A Global Crisis

Currently more than

108.4 Million

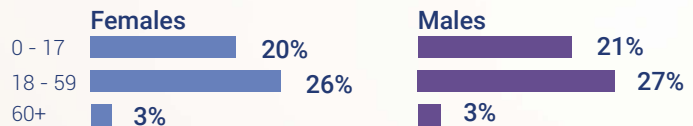
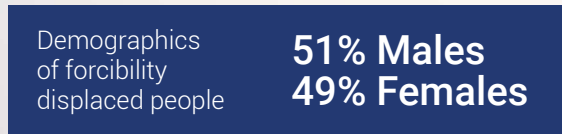
Forcibly displaced persons around the world

Present in OIC Member Countries

51.5 Million

Representing

48%



Forcibly displaced persons globally and in OIC Member Countries

35.3 Million

is the number of refugees globally

Which constitutes

47%

of the global refugee population

16.8 Million

Hosted in OIC Member Countries

61.7 Million

Internally displaced persons (IDPs) globally

Which constitutes

54%

of the global IDP population

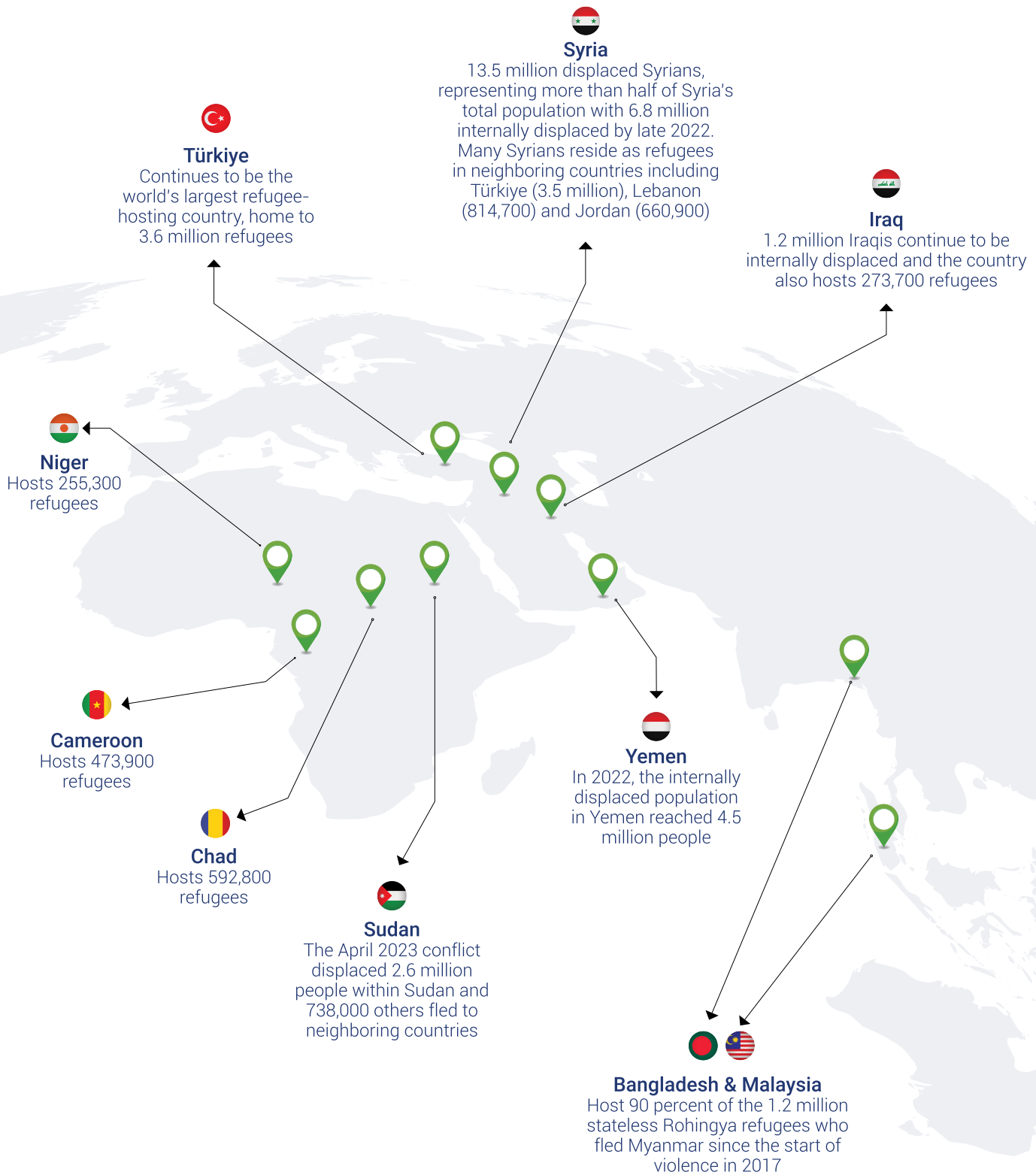
33.9 Million

Hosted in OIC Member Countries

(Sourced from UNHCR reports)

OIC Member Countries Refugees and IDPs are mainly from **Syria, Somalia, Palestine, Afghanistan, Yemen, Nigeria, Sudan, Libya, Iraq, and Bangladesh.**

Member Countries Refugee Noteworthy Facts



(Sourced from UNHCR reports)



GIFR is an innovative solution

Contact info



Amina Zoubairi



zoubairi@unhcr.org



00966555026039



Khemais El Gazzah



kelgazzah@isdb.org



00966556767722

GIFR
Management
Unit



Belal Naiem Khalifa



bKhalifa@isdb.org



00966534777146

